



Romantic Armor

Jessica Pontoriero
APD 310 – Portfolio Development for Apparel Design



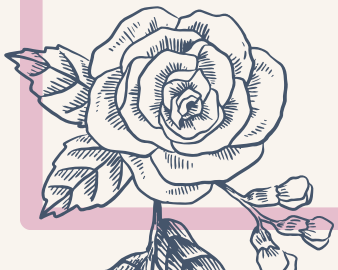
Research Summary



Throughout history, the corset has symbolized both beauty and restriction. Once a garment used to mold and control the body, it has since evolved into a design element that embodies empowerment and individuality. Scholars such as Erkal (2017) describe how the corset transformed from an instrument of oppression into a “flexible medium appealing to a wide range of audiences,” revealing its adaptability across generations.

Contemporary designers continue this transformation by embracing the corset as a platform for creative freedom. As Mower (2021) notes, modern corsetry enhances natural form rather than suppressing it, reshaping the dialogue between fashion and the body. The corset’s dual legacy, discipline and desire, offers endless potential for reinterpretation.

This project builds on that duality. By merging corsetry with floral motifs, Romantic Armor redefines the corset as both protective and expressive. The piece becomes a metaphor for strength growing from softness, for resilience emerging from beauty. It reflects how modern design can remix history to reclaim power and redefine what femininity represents today.





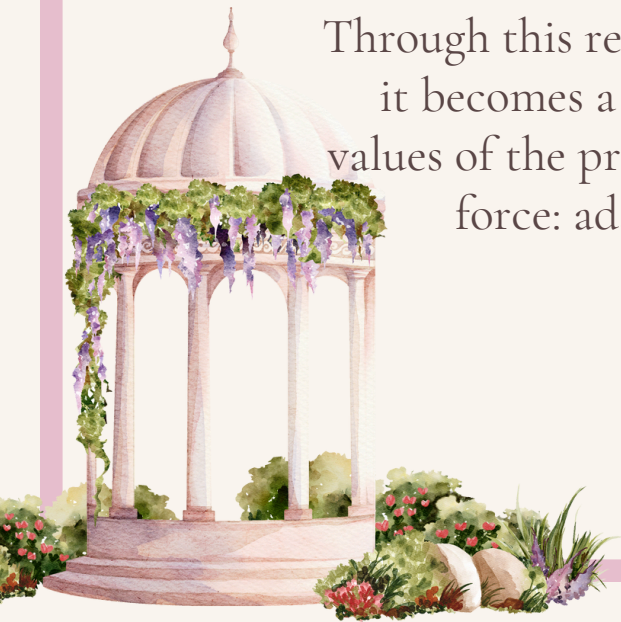
Concept Description



Romantic Armor explores the intersection of strength, vulnerability, and transformation through the lens of modern corsetry. The collection reimagines the corset not as a cage but as a framework for self-expression, where structure supports rather than confines.

The designs balance sculptural form with organic flow, blending architectural seams with delicate floral textures. Lace, metallic tones, and soft blush fabrics merge to tell a story of protection and grace. Inspired by Victorian silhouettes yet grounded in contemporary perspectives, each look acts as a visual metaphor for empowerment: armor made tender, restraint made beautiful.

Through this reinterpretation, the collection becomes more than fashion, it becomes a statement about how the past can evolve to mirror the values of the present. Romantic Armor celebrates femininity as an active force: adaptable, resilient, and radiant in its contradictions.

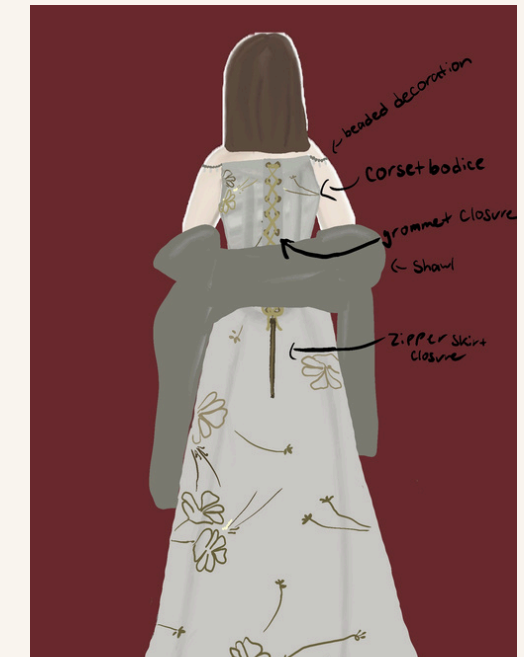
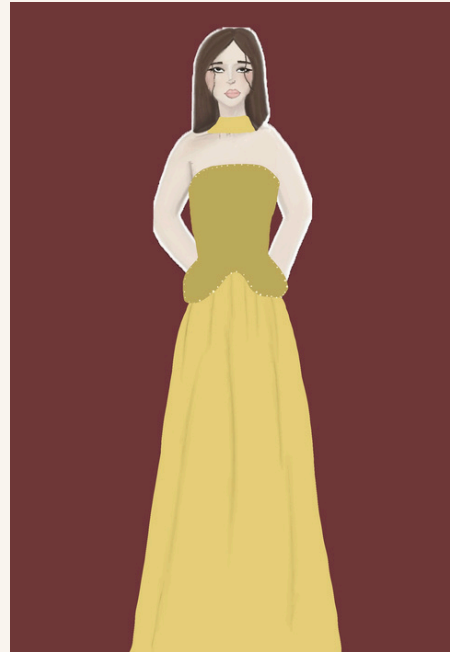
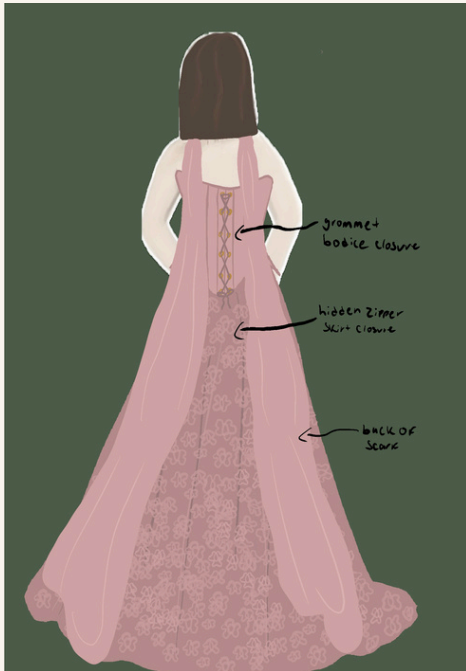


Mood / Concept Board

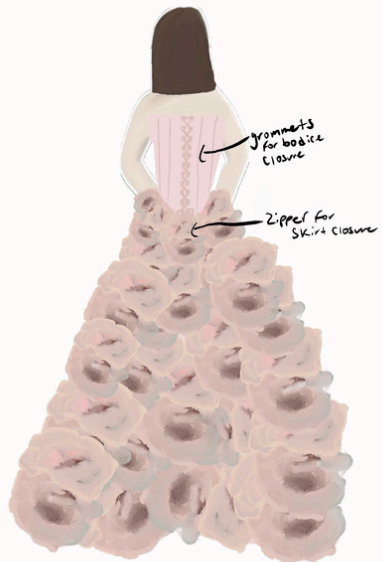
Mood board featuring blush tones, corset silhouettes, and floral details that embody the theme of romantic strength.



Sketches



Sketches



Design Board – Look 1



Design Board – Look 2



Design Board – Look 3





Reflection

This project deepened my understanding of how research and storytelling shape design. I learned to view the corset not simply as an aesthetic object but as a language of transformation, turning past symbols of restriction into expressions of confidence.

My process evolved through experimentation with proportion, texture, and balance, discovering that true elegance lies in harmony between structure and emotion. The greatest challenge was refining cohesion across the collection while preserving individuality in each look. The result is a portfolio that captures both the discipline and poetry of design, inspiring me to continue merging craftsmanship and concept in future work.

